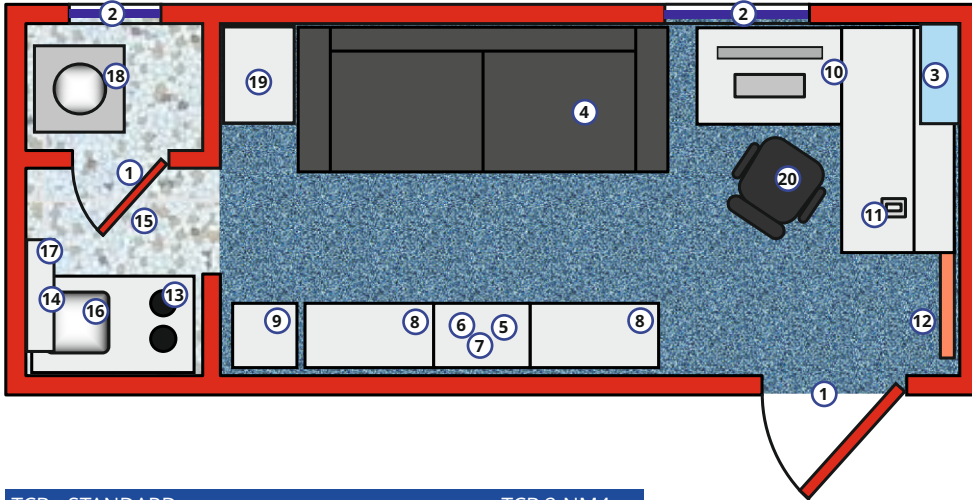


Application

- container "briefing" for mobile airport set

~ 4 500 kg

length width height
6058 × 2438 × 2591



1. doors
2. windows
3. air condition
4. sofa
5. satellite tv
6. radio
7. video
8. library
9. stand with drinking water
10. computer
11. telephone
12. el. heating
13. cooker
14. refrigerator
15. kitchenette
16. kitchen sink
17. microwave oven
18. toilet
19. wardrobe

TCB - STANDARD	TCB.2.NM4
Profile of entrance door	900x1995 mm
Footing under the container	no
Double floor	no
Lighting	fluorescent
Emergency lighting	yes
Obstruction lights	no
Air condition	yes
Heating	yes
Open door alarm	no
Monitoring of container internal temperature	no

SKU

TCB.2. x x x

Type series of container _____

Thermal insulation _____

N = normal thermal insulation (-30/+35 °C)

A = arctic (-55/+35 °C, PUR 80 mm thick container insulation, heating of entrance door doorframe)

T = tropic (-10/+55 °C)

Execution _____

S = stationary (cable ducts in the floor)

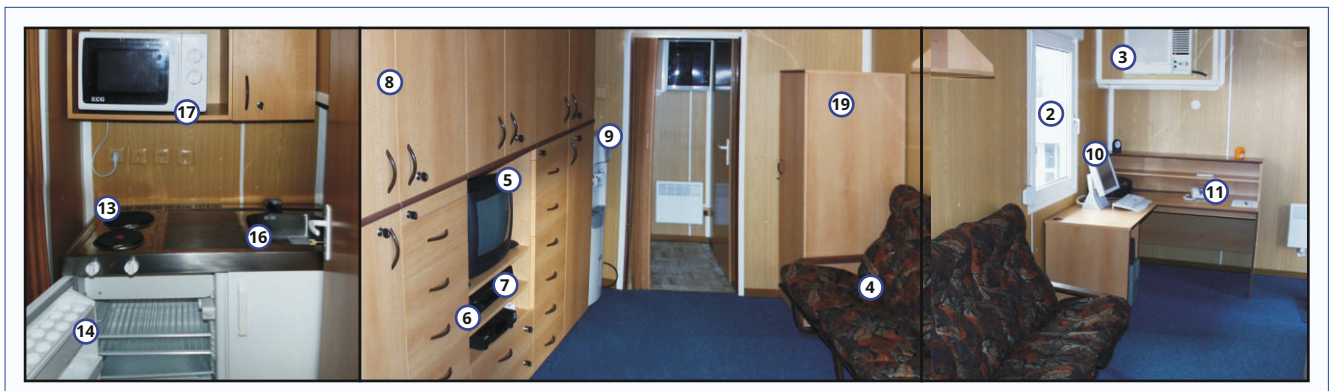
M = mobile execution (cable ducts through connectors in cable pockets)

Voltage system _____

2 = 3 x 220 V / 50-60 Hz

4 = 3 x 230/400 V / 50-60 Hz

0 = other voltage system, must be specified



chapter:

6.3

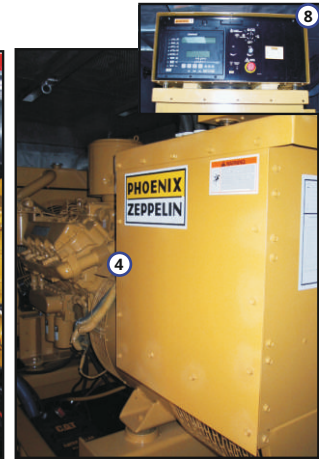
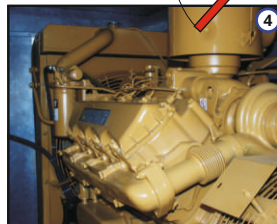
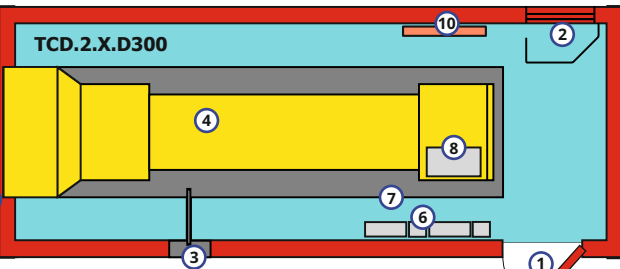
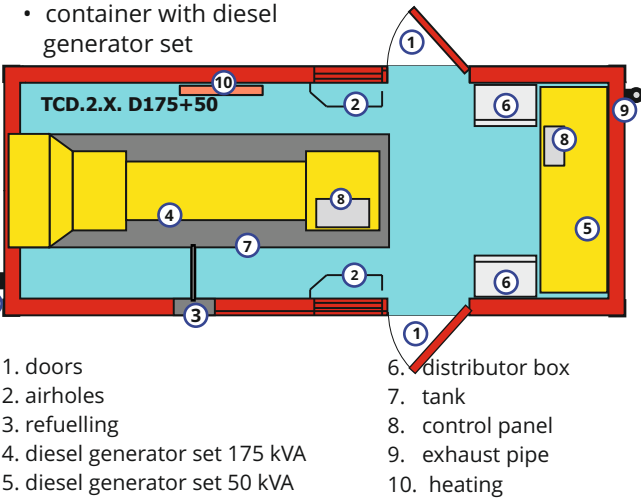
TCD



Application

- container with diesel generator set

~ 7 500 length 6058 × width 2438 × height 2591



TCD - STANDARD	TCD.2.NS45.D250
Profile of entrance door	900x1995 mm
Footing under the container	yes
Double floor	no
Lighting	yes
Emergency lighting	yes
Obstruction lights	no
Air condition	no
Heating	yes
Open door alarm	yes
Monitoring of container internal temperature	no
Self-consumption switchboard	yes
Diesel generating set – max. output	300 kVA (D300)
Diesel generating set protection	accord. to the output

SKU

Type series of container _____

Thermal insulation _____

N = normal thermal insulation (-30/+35 °C)

A = arktic (-55/+35 °C, PUR 80 mm thick container insulation, heating of entrance door doorframe, diesel generating set oil heating, ether start of diesel generating set)

T = tropic (-10/+55 °C)

Execution _____

S = stationary (cable ducts in the floor)

M = mobile execution (cable ducts through connectors in cable pockets)

Voltage system _____

2 = voltage system 3 x 220 V

4 = voltage system 3 x 230/400 V

0 = other voltage system, must be specified

Frequency _____

5 = mains frequency 50 Hz

6 = mains frequency 60 Hz

Output _____

D150 = diesel generator set output 150 kVA

D200 = diesel generator set output 200 kVA

D250 = diesel generator set output 250 kVA

D300 = diesel generator set output 300 kVA

D175+50 = pair of independent diesel generator sets 175 kVA and 50 kVA

TCD.2 . x x x x . x

