

Application

- elevated high intensity directional LED light suitable for CAT I-III ICAO
 - APP - approach centre line and crossbars light
 - ASR - approach side row light
 - END - runway end light
 - SBL - stop bar and no-entry bar lights
 - THR - threshold light
 - THRWB - threshold wing bar light

Certificate Basis

- ICAO Annex 14, Vol. 1, App. 1+2
- EASA CS ADR-DSN.U.930+940
- ICAO Doc 9157, Part 4+6

Description/Properties

- robust light design ensures high durability
- glass optics with a long life
- monitoring module with transformer disconnection function
- high protection IP 56
- excellent color properties due to LEDs
- lifetime 110,000 hours
- easy repairability

Mounting/Connection/Supplying

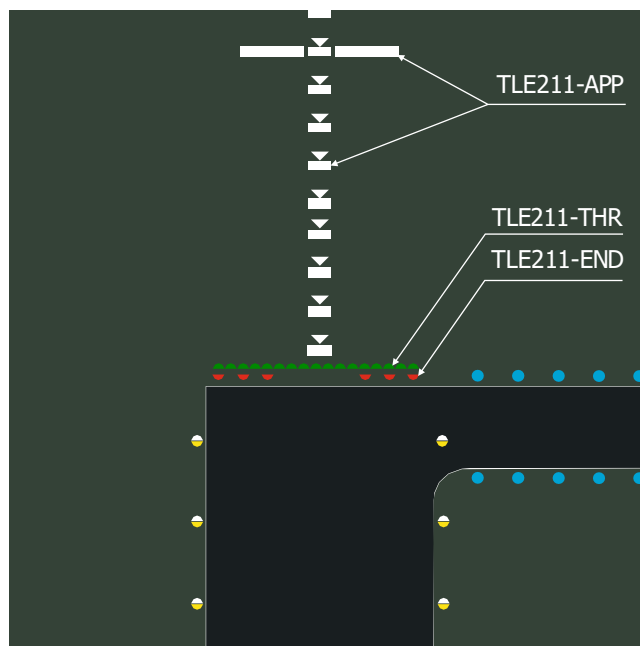
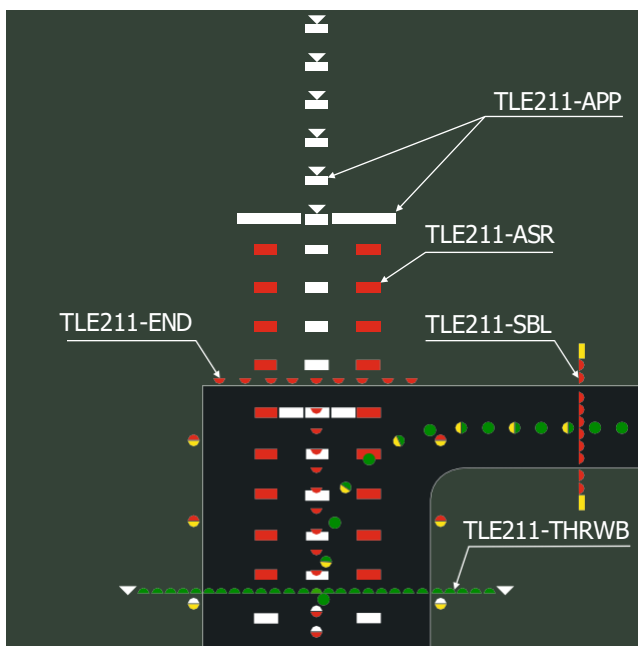
- assembly
 - adjustable height (breakable coupling 001 057 + tube diameter 60 mm 001 400)
 - lowest optical height (only breakable coupling 001 057.1)
- standard serial 6.6 A or 2.2 A power supply via standard isolating transformer
- power cable with connector L-823 Type II, Class A, Style 6

**Mechanical Parameters**

• dimension	135×187×156 mm
• weight	3,3 kg
• surface	RAL1021/metal

Power Consumption

• APP	37 VA
• ASR	15 VA
• END	15 VA
• SBL	15 VA
• THR	32 VA
• THRWB	32 VA



chapter:

5.3.1

TLE211

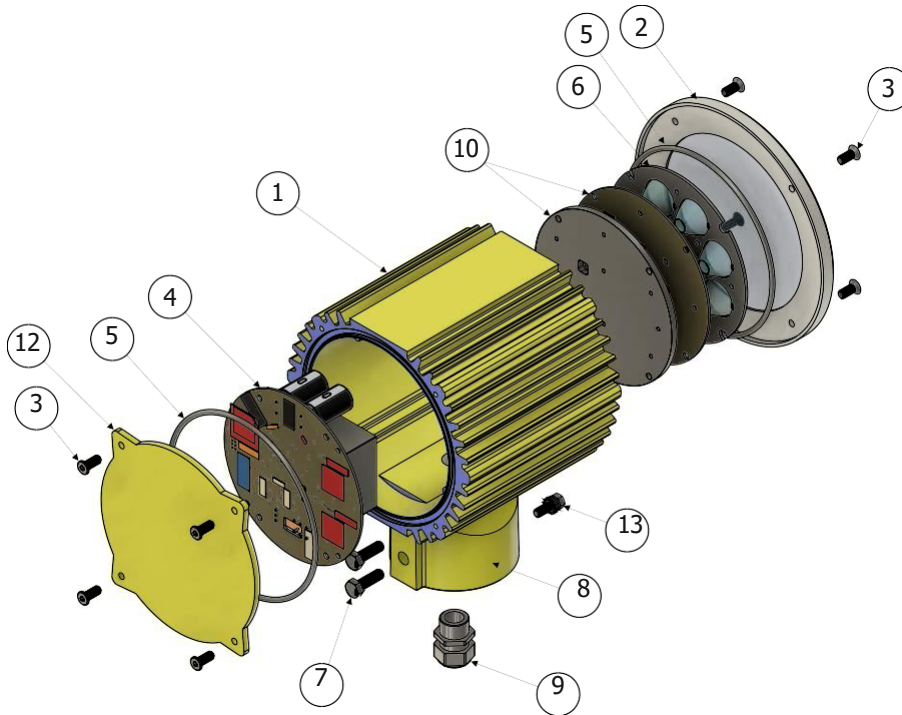


Operation Conditions

- protection IP 56
- working temperature -55 to +55 °C
- humidity up to 95 % at +55 °C
- wind resistance up to 540 km/h

Accessories

- fixing elements (tubes, breakable couplings, base plates, etc.) and extension cables of the secondary wiring must be ordered separately



Construction/Spare Parts

- 1 light body
- 2 front flange
- 3 screws
- 4 electronics
- 5 seals
- 6 optical module
- 7 locking screws
- 8 lower part of the light
- 9 bushing
- 10 optical module holder
- 12 rear part
- 13 ground screw

SKU

TLE211-APP-W-S6-N
TLE211-APP-W-S6-N

light group

1 - unidirectional

light function

- APP - approach centre line and crossbars light
- ASR - approach side row light
- END - runway end light
- SBL - stop bar and no-entry bar lights
- THR - threshold light
- THRWB - threshold wing bar light

beam color

G - green, R - red, W - white

power supply

- S6 - airfield series power supply system 6,6 A
- S2 - airfield series power supply system 2,2 A

other specification (code must be written in alphabetical order)

- N - aluminum parts without surface treatment
- SPC - on-demand specification
- ARC - arctic kit (additional heating)

SKU Examples:

- TLE211-APP-W-S6
- TLE211-END-R-S2

approach centre line and crossbars light, white, power supply system 6,6 A
runway end light, red, power supply system 2,2 A

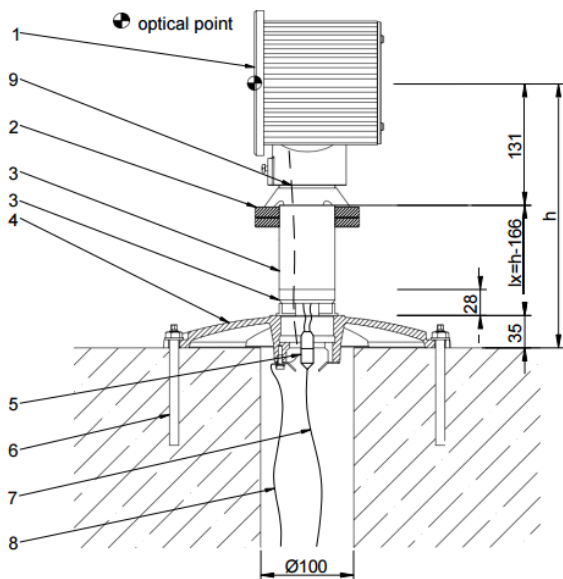
chapter:

5.3.1

TLE211



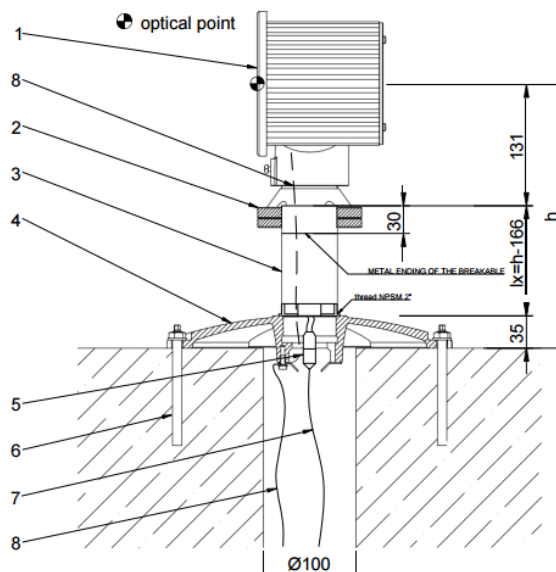
Elevated directional light TLE 211 with breakable coupling



1	Light TLE211
2	Tilting device (315 921T)
3	Bearing tube Ø60x2.5 (001 400) + Breakable coupling (001 057) Complete non-detachable connection
4	12" threaded lid 2" NPSM (002 660)
5	Secondary connector (L-823 Style 12)
6	Chemical anchor M10 - 6 pcs
7	Secondary cable (H07RN-F 2x4)
8	Grounding cable (H07V-U 1x16 GNYE)
9	Grounding cable (H07V-K 1x4 GNYE)

Note: h - optical height of the light
lx - length of the tube assembly with a clamp on the lid seating surface

Elevated directional light TLE 211 with breakable tube



1	Light TLE211
2	Tilting device (315 921T)
3	Breakable tube Ø60 terminated with external thread NPSM 2" + metal end on opposite end at Ø 60 mm
4	12" threaded lid 2" NPSM (002 660)
5	Secondary connector (L-823 Style 12)
6	Chemical anchor M10 - 6 pcs
7	Secondary cable (H07RN-F 2x4)
8	Grounding cable (H07V-U 1x16 GNYE)
9	Grounding cable (H07V-K 1x4 GNYE)

Note: h - optical height of the light
lx - length of the breakable tube on the lid seating surface