

→ Application

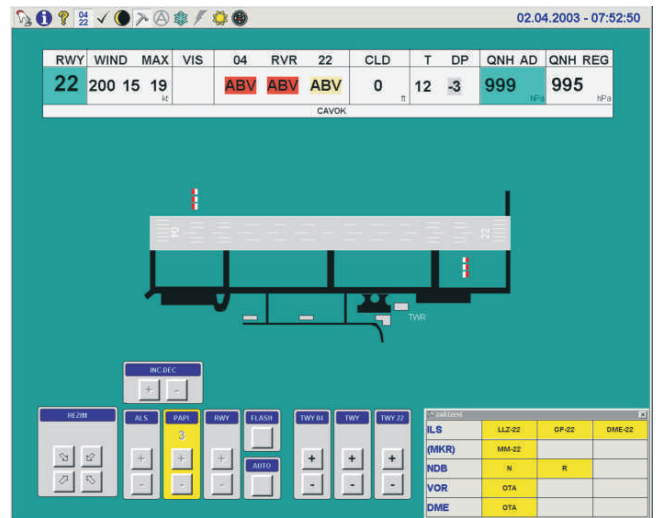
- medium size airport without category and category I. according to ICAO

→ Description/Properties

- well arranged control with use of push-buttons on touch-screen or by trackball
- well arranged representation of information in several screens on one monitor
- two inter-changeable working sites, where one works as master/workstation and the other one only as workstation
- communication between working sites with use of the network LAN Ethernet (100 Base-T) up to the distance of 100 m or with use of WAN modems up to the distance of 3-15 km (depending on quality of the line)
- remote control and monitoring of maximum nine airfield ground lighting systems in three or five degrees of luminous intensity
- data transfer line for control and monitoring uses only one pair in communication cable
- control and monitoring up to the distance of 10 km
- remote servicing supervision

→ System possibilities

- AMS MINI 2 x DAP 128 TC
- AMS MINI PLUS 4 x DAP 128 TC
- control and monitoring of one landing runway (RWY)
- control and monitoring of guidance systems (ALS) and elevated light (PAPI) from both directions
- control and monitoring of maximum four taxiways (TWY)
- direct connection to constant current regulators TCR.2 (Transcon)
- connection of regulators made by other manufacturers with use of the rack SU-24B.RT with I/O modules RT-24
- monitoring and control of the most important power systems with use of units PS-02
- watching of objects and fire alarm
- connection of meteorological system and representation of its data on the monitor
- automatic setting of airfield ground lighting systems luminous intensity depending on runway visual range (RVR)
- time synchronization with use of GPS system
- acoustic signalling of failure states; voice output in language of the user
- archiving of operational and failure states
- in case of utilization of constant current regulators TCR.2 possibility of long-term monitoring of insulation state of serial circuits cables with use of



- well arranged diagrams
- working sites embedded into the table TWS-01 or stand-alone working sites

chapter:

2.2.3

AMS MINI

