



REGIONAL AIRPORTS 8.2

TRANSCON is world's only company which successfully managed to conceive, design, manufacture and install comprehensive modular solutions for regional airports of virtually any type, category and size. Our unique regional airport modular program consists of following main segments and technologies:

- modular ATC towers (standard or double version)
 - fully equipped, including transceivers, meteo-stations, voice-recorders, remote control and monitoring systems etc.
- modular passenger terminals (departure/arrival)
- fully equipped, including passenger luggage conveyors, check-in counters with scales, security check in systems, passenger information systems, all utilities etc.
- modular hangars for airport handling and service equipment
- modular fire-fighting and ambulance stations
- modular redundant power supply systems

Advantages of Modular airport solutions:

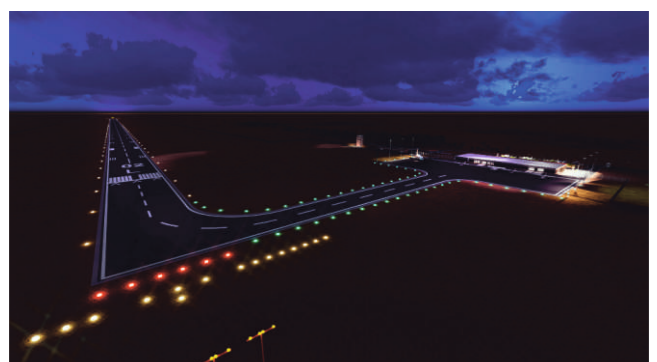
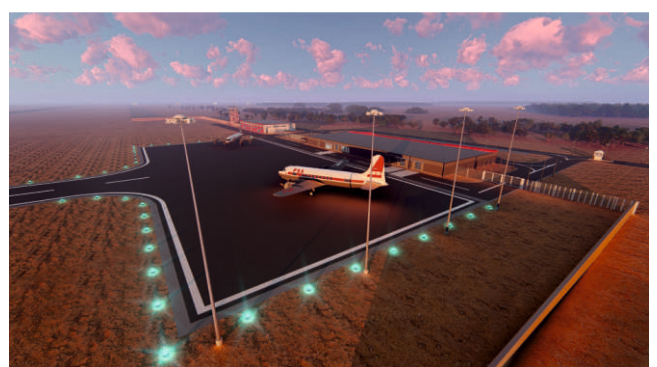
- high reliability reliable, easy and rapid installation (typical regional airport can be usually put into operation within 9 months)
- life-span of approximately 20 years
- comprehensive solution
- reasonable price

We offer following modular passenger terminal types:

- PAX 20 (20 passengers arriving/20 passengers departing in a rush hour)
- PAX 40 (40 arriving/40 departing)
- PAX 60 (60 arriving/60 departing)
- PAX 100 (100 arriving/100 departing)
- PAX 150 (150 arriving/150 departing)
- PAX 200 (200 arriving/200 departing)

For regional airports, we can also offer following services:

- planning and design
- construction/reconstruction of runways, taxiways or aprons
- installation of aerodrome lighting and navigation systems
- comprehensive modular systems as mentioned above
- customized on-site training with optional certification
- financing services (in cooperation with Czech Insurance Agency)
- commissioning etc.



chapter:

8.2 REGIONAL AIRPORTS



MODULAR PASSENGER TERMINALS

Description/Properties

- can be easily tailored to concrete needs and requirements of the customer
- easy assembling - within 8 weeks by small team of experts
- architecture may be tailored to individual customer's requirements
- completely equipped with inner electrical, water and lighting system (up on request can be adjusted to local standards)
- reliable materials and technologies are utilized

Structure

- frame
 - steel frame made of bent galvanized steel prof.
 - frame construction is based on static calculation provided by certified company in accordance with Eurocodes
 - dimensions: 6×2,4×3,3 m
 - construction clear height: 3,000 m
- load
 - floor: 2,5 kN/m²
 - roof: 1,0 kN/m²
 - wind: up to 1,6 kN/m² (depending on the place of installation)
- heat transfer coefficient
 - roof: U=0,240 W/m²K
 - external walls: U=0,300 W/m²K
 - floor: U=0,500 W/m²K
 - calculation according to EN 6946, EN 10211-1
- fire resistance
 - structure is not fire rated
 - hydrants, extinguishers - not in scope of delivery, to be supplied locally
- roof
 - flat roof
 - corrugated galvanized steel sheet 0,7 mm
 - galvanized cross bearing beams
 - mineral wool 180 mm, vapor barrier 0,2 mm
 - melamine board, thickness 10 mm white
 - suspended ceiling AMF 600×600 mm
- floor
 - PVC Tarkett Standard 2 mm 495 grey
 - cement fibre boards 22 mm
 - vapor barrier 0,2 mm, Styrodur 30 mm
 - mineral wool 80 mm + galvanized cross bearing beams
 - bend galvanized steel sheet thickness 0,4 mm
- external wall
 - horizontal fasade sheet Aluzinc 20 in RAL Wood or galvanized bearing grid
 - OSB or MFP board 10 mm, insulation mineral wool 140 mm, vapor barrier - 0,2 mm
 - chipboard 10 mm Fermacell board 10 mm



Heating, coolign, ventilation

- heating - not in the scope of this quotation
- ventilation - not in the scope of this quotation, to be quoted

Windows and doors

- external doors
 - aluminium frame Heroal WD72 door incl. side windows
 - size of door 2000×2200 mm
 - safety glass filling Ug = 1,1 W/m²K
- internal doors
 - wood doors 800×2000 mm in wood doorframe
 - stainless hardware handle/handle
- windows
 - Veka Softline AD72 5 chamber window frame + glass filling Ug = 1,1 W/m²K
 - dimensions and quantities in accordance with the drawing

Electric intallation

- electric installation calculated in German stand.
- 50×sockets 230 V Light switches
- sockets in offices installed in trunking Betermann 135/65
- one main fusebox
- cables lead in suspended ceiling in trunking
- lamps - ceiling lamps installed in system ceiling 4×18 and 2×18 W fluorescent tubes

Sanitary installation

- ceramic closet hung type (Viega, Geberit)
- ceramic wash basin EU style+mixing tap Kludi Shower mixing tap Kludi Zenta thermostatic Water piping Cu
- sewage piping HT (PVC grey)
- water connection points, according to the drawing

Water heaters

- EWH 30 I