



TLP90

Application

- precision approach path indicator system units (lights) for airports and heliports PAPI/APAPI

Classification

- FAA AC 150/5345-28; Style B, Class II

Accordance with

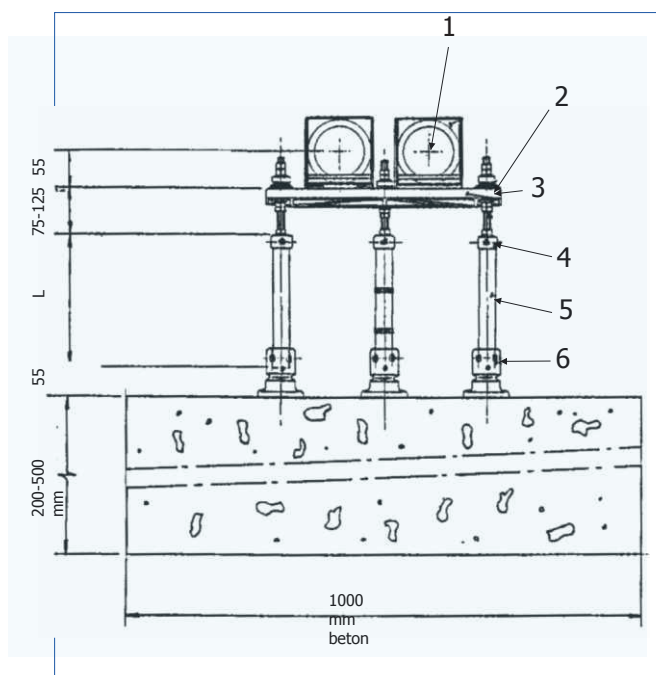
- Engineering Brief No. 67D
- IEC TS 61827
- ICAO Annex 14, Vol. I
Figure: A1-1b, A2-23
- EASA CS-ADR-DSN
Figure: U-1B, U-26
- TP-312
Figure: A-1(b), B-19

Description/properties

- designed for simplicity and serviceability
- the light consists of two or three projector units
- simple and durable aluminium construction with stainless steel fixings and IP54 protection rating
- easy maintenance thanks to removable projector units from the base plate in seconds
- base plate (for projector units) consisting of an anodised aluminium workpiece
- front lens made of glass
- operation with any CCR designed in accordance with IEC or FAA requirements
- excellent efficiency and colour characteristics thanks to the use of LED technology
- the power input is variable like halogen lamps, according to the requirements of Engineering Brief No. 67D
- heated front lens prevents icing on the optical system
- LED failure detection, as required by Engineering Brief No. 67D
- monitoring with the function of disconnecting the light/projector unit from the transformer
- interchangeable with halogen PAPI/APAPI TP90 without changing the base plate
- fixed or mobile fixing option

Mechanical parameters

- unit weight approx. 15 kg
- dimensions of fixed mounting kits
 - two projector units 56x80x75 cm
 - three projector units 56x80x90 cm



Construction

1. projector unit
2. elements of the vertical direction of the radiation (continuously 0° to +10°)
3. base plate
4. elements of the horizontal direction of the radiation (continuously ± 1°)
5. stakes/tubes
6. breakable couplings

TLP90



Resistance to

- temperature $-55 \div +55$ °C temperature shock
- moisture, snow, water IP54
- salt fog, solar radiation and UV radiation
- wind resistance 480 km/h
- 10 kV (15 kV) surge protection
- EMC as required by IEC TS 61827

Source of light

- power cable with FAA AC5345-26, L-823 Type II, Class A, Style 1
- isolation transformer 6.6 A or 2.2 A at the output secondary line (isolating transformer power 65 W - 150 W)

Ordering codes

- lights with two projector units, fixed mounting
 - TLP90-PAPI-S2 2.2 A airport serial power supply
 - TLP90-PAPI-S6 6.6 A airport serial power supply
- lights with three projector units, fixed mounting
 - TLP90-PAPI-S2 2.2 A airport serial power supply
 - TLP90-PAPI-S6 6.6 A airport serial power supply
- accessories
 - TP90.CM clinometer

* mobile variants of TLP90 lights must be consulted