



TLE271

Application:

- LED high intensity elevated runway protection light (Runway Guard Light)
- LED elevated light for holding position on runway (Road-Holding Position)

Accordance with:

- ICAO Annex 14, Vol. I
- EASA CS-ADR-DSN
- IEC TS 61827
- FAA AC 150/5345-46E L-804(L)
- FAA EB No.67D
- TC TP312

Description/properties:

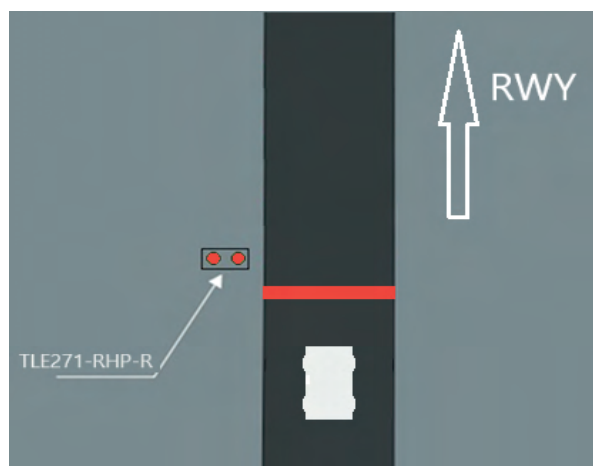
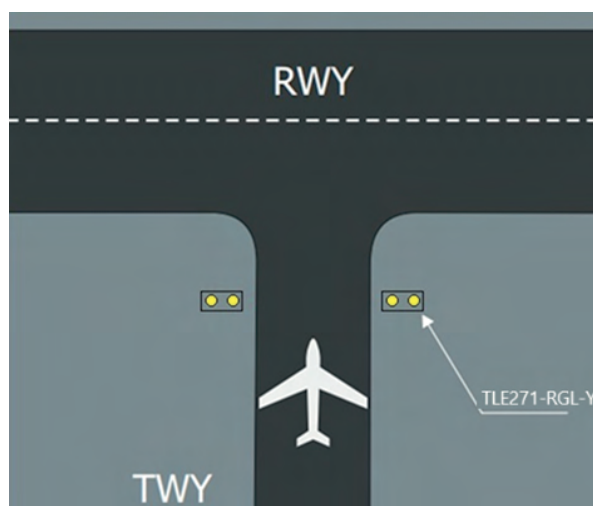
- compatible with existing infrastructure
- without distracting visual flickering
- operation with any CCR (Constant Current Regulator)
- designed in accordance with the requirements of the IEC and FAA
- significant reduction in CCR power consumption compared to halogen bulbs
- excellent efficiency and color characteristics due to the use of LED technology
- two light sources are set in a black front panel and equipped with separate shades
- to minimize the effect of sunlight and ensure high contrast during the ON/OFF cycle
- the light intensity is variable, same as for halogen bulbs as required by FAA EB No.67D

Technical parameters:

- current supply: 6.6 A or 2.2 A
- cover: IP67
- operating temperature: -55 °C to +55 °C
- storage temperature: -55 °C to +75 °C
- service life: 110 000 h under normal operating conditions
- flashing frequency: alternating flashes at a frequency of 45-50 flashes per minute
- surge protection: ANSI/IEEE C62.41-1991, 1, cat. C2, 10 kV / 5 kA (1.2/50µs - 8/20µs) EMC: IEC 61000-6-2 and IEC 61000-6-4
- vibration resistance: 20-2000 Hz with 2 G acceleration

Accessories:

- 001 427 - Al carrier pipe with breaking coupling (prooptical light height 490 mm)
- 002 113, 002 123, 002 133 – mounting needle
- 002 660 – base cover 12" with 2" NPSM thread for mounting on a flat surface
- 002 663 - 12" base cover with 2" NPSM thread for mounting on 12" base



TLE271



Mechanical parameters:

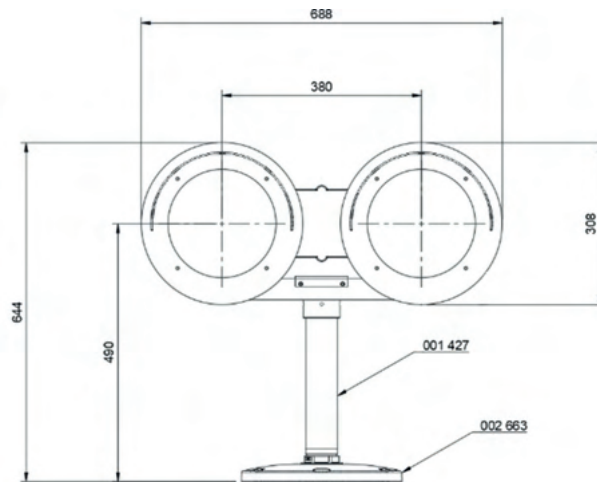
- dimensions: 688 × 334 × 290 mm
- weight: 11,5 kg
- optical height: 490 mm
- vertical adjustment: 0-20 °/ 1°
- horizontal adjustment: 0-360°
- surface: natural aluminum / RAL1021 / RAL9005

Connection and power supply:

- without MONITORING function, one power cable with FAA AC5345-26, L-823
- with MONITORING function, one power supply combination cable with five-pin connector
- current isolating transformer 45-150 W (not included)

Power input:

- TLE271-RGL-Y-S6-X: 42 VA
- TLE271-RGL-Y-S2-X: 40 VA
- TLE271-RHP-R-S6-X: 20 VA



Ordering codes:

TLE271 - RGL - Y - S2 - M

Light functions:

RGL – Runway Guard Light
RHP – Road-Holding Position

Light field color:

Y – Yellow
R – Red

Power system type:

S2 – Nominal current supply 2.2 A
S6 – Nominal current supply 6.6 A

Monitoring:

X – Without monitoring function
M – With monitoring function

Other specifications:

SPC – Specifications on request
ARC – Artic kit (additional heating)

*for readability, in the example above, spaces are used



TLE271

Examples of ordering codes:

TLE271-RGL-Y-S6-X

unidirectional high intensity runway guard light, yellow, power supply 6,6 A, without monitoring function

TLE271-RHP-R-S6-X

unidirectional guard light for holding position on runway, red, 6.6 A power supply, without monitoring function